

CR 2109/39  
LAMPASAS, TEXAS 76550

# THE RANCHES AT ONIONTOP

100-300+ acre tracts  
LAMPASAS COUNTY



Josh Smith  
REALTOR®  
512-699-4684  
Josh@texasranch.com

DMTX.COM  
TEXASRANCH.COM  
✂✂✂

Texas Ranches is an affiliate of  
DMTX Realty and Coldwell Banker United



Co-listed with



CR 2109/39  
LAMPASAS, TEXAS 76550

# THE RANCHES AT ONIONTOP

100-300+ acre tracts  
LAMPASAS COUNTY



## THE RANCHES AT ONIONTOP

**Spectacular Views, Big Oaks & Seasonal Creek**  
*100 - 300+ acre tracts within 1.5 hours of Austin*

The Ranches at Oniontop, located deep in the heart of the famed Texas Hill Country, is situated between Lampasas, Lometa, and Adamsville, Texas. The Ranches at Oniontop are ideal for recreation and hunting in close proximity to major cities, only 1.5 hours from Austin. The views of the surrounding rolling hills are some of the best we've seen in the entire county. The properties have excellent tree cover for wildlife. Endless hunting opportunities for whitetail deer, Rio Grande turkey, wild pigs, birds, and other small game.

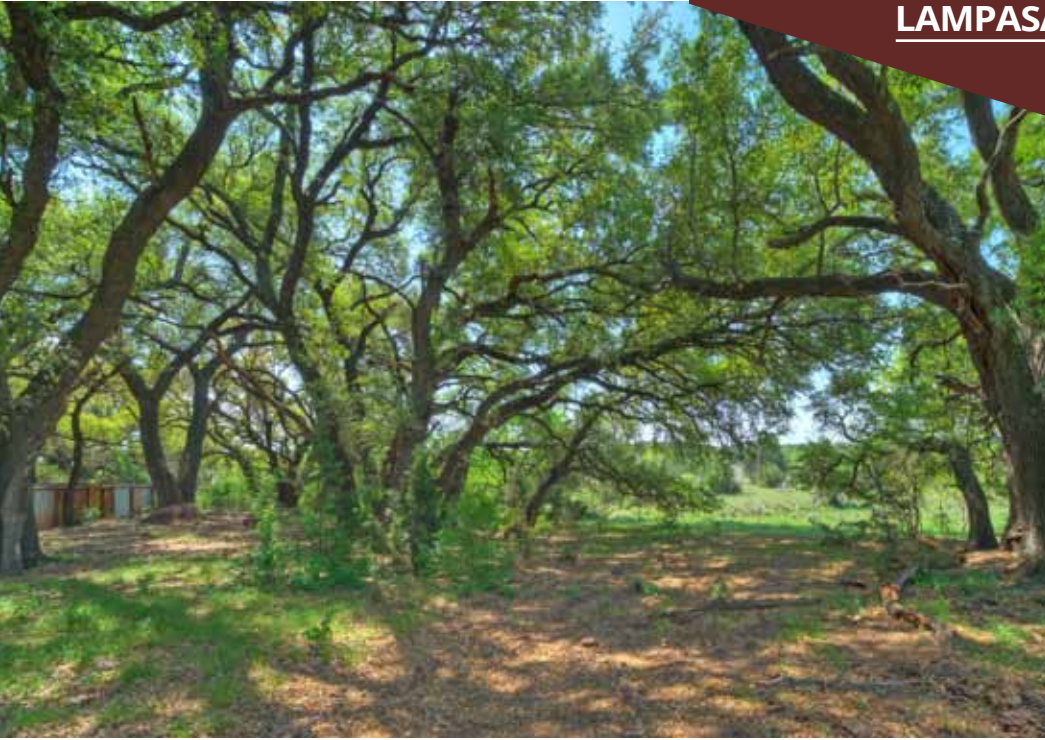
**POTENTIAL USE:** The sky is the limit. The views, native wildlife, water, and gentle rolling topography make The Ranches at Oniontop versatile and desirable, ideal for turn-key recreational and/or hunting. Whether you're looking for a family or corporate retreat or even an investment hold, the tracts are suitable for a wide range of uses.



CR 2109/39  
LAMPASAS, TEXAS 76550

# THE RANCHES AT ONIONTOP

100-300+ acre tracts  
LAMPASAS COUNTY



**TOPOGRAPHY:** Rolling terrain, nearly 150ft of varied elevation change, giving it a look that it's bigger than it is while remaining 100% usable and accessible.

**WATER:** There is a seasonal creek that runs from the front of the property across the ranch to the back corner. There are also 3 tanks with potential for additional and larger tanks/ponds along the creek and drainage.

**UTILITIES:** Co-op waterline at county road. Water wells can be drilled. Electricity nearby.

**WILDLIFE:** Extensive tree cover gives way to the outdoorsman's dream: whitetail deer, Rio Grande turkey, wild pigs, duck, dove, predators like bobcat and coyote and other species native to the Texas Hill Country.

**LOCATION:** The ranch is just NW of Lampasas, only 15 minutes to town. 1 hr 10 mins to Georgetown/Round Rock, and 1.5 hours to Austin.



## SUMMARY OF FEATURES

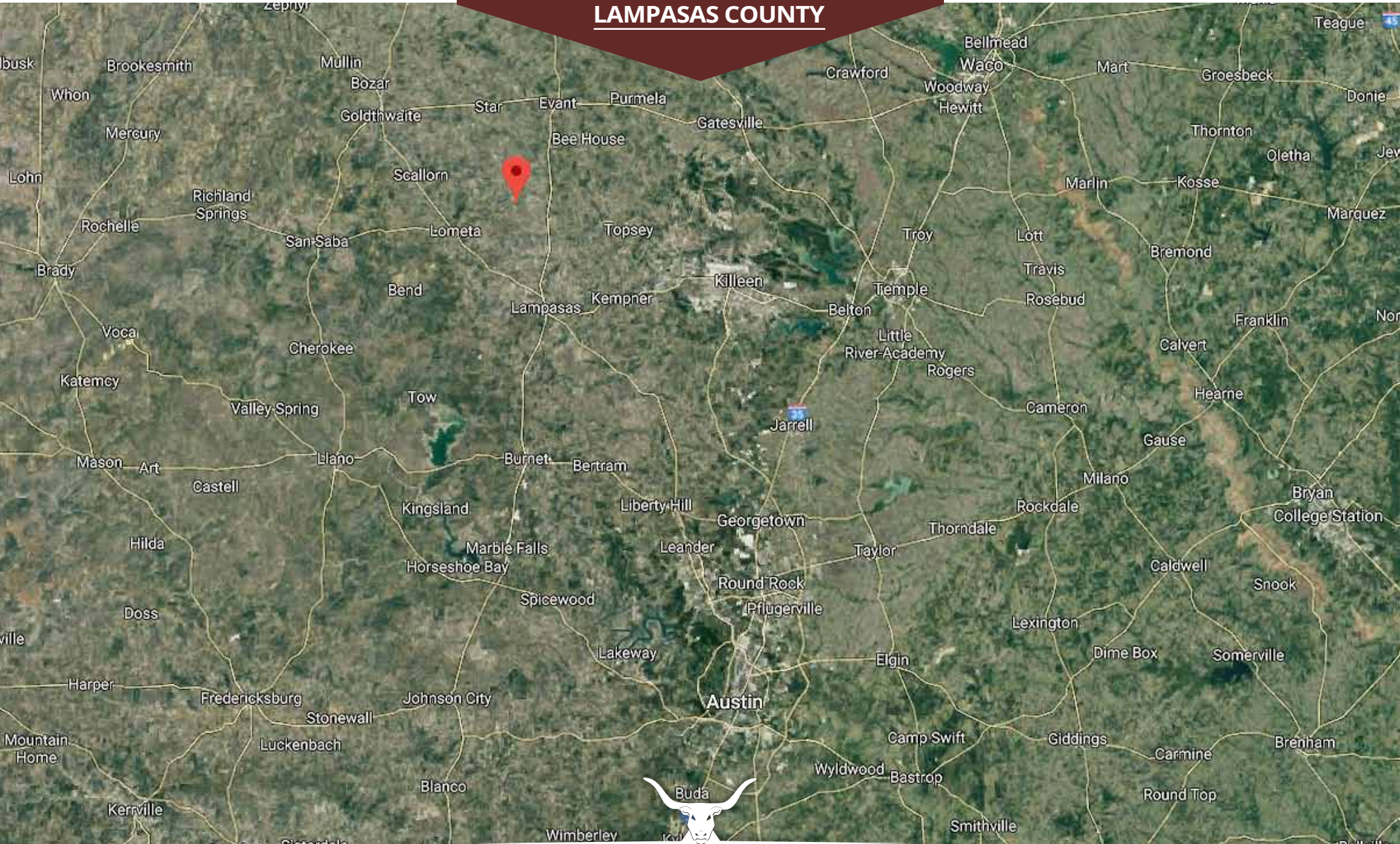
- |                                      |  |                                       |
|--------------------------------------|--|---------------------------------------|
| △ Creek frontage on 3 tracts         | △ 20-mile views                                | △ Large oak trees                     |
| △ Water features on most tracts      | △ Close proximity to the sprawling Austin area | △ Ag exempt with minimal holding cost |
| △ County road frontage on each tract | △ Rolling terrain, 100% accessible & usable    | △ Loaded with native wildlife         |

CR 2109/39  
LAMPASAS, TEXAS 76550

# THE RANCHES AT ONIONTOP

100-300+ acre tracts

LAMPASAS COUNTY



THE RANCHES AT ONIONTOP  
TEXASRANCH.COM

CR 2109/39  
LAMPASAS, TEXAS 76550

# THE RANCHES AT ONIONTOP

100-300+ acre tracts  
LAMPASAS COUNTY



Tract 6 & 7 | 347 ac. | \$1,285,000

Tract 5 | 110 ac. | UNDER CONTRACT

Tract 4 | 107 ac. | \$425,000

Tract 3 | 103 ac. | \$410,000

Tract 2 | 41 ac. | UNDER CONTRACT

Tract 3 & 4 | 210 ac. | \$799,000

Adjacent acreage available

COUNTY RD 69

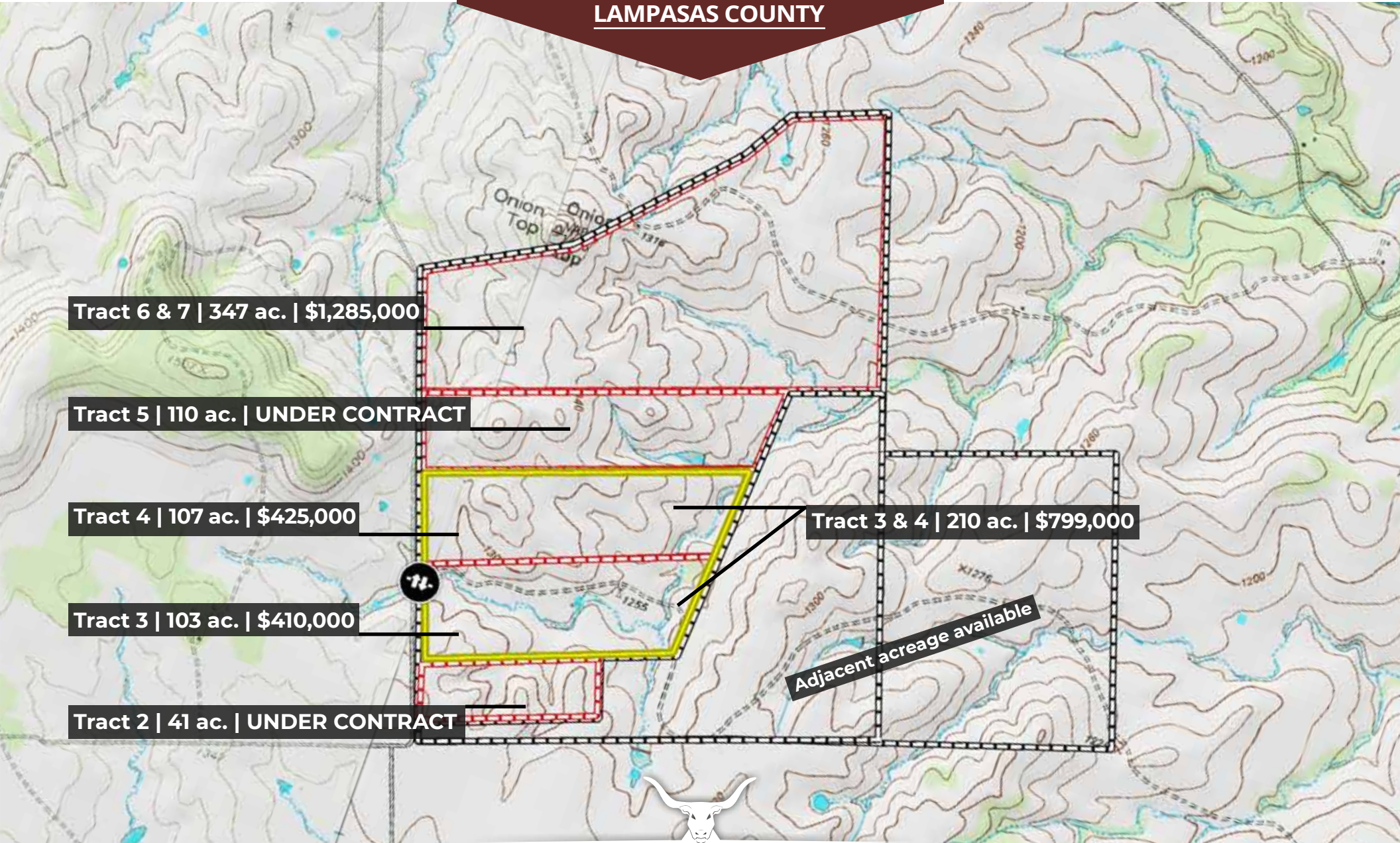


THE RANCHES AT ONIONTOP  
TEXASRANCH.COM

CR 2109/39  
LAMPASAS, TEXAS 76550

# THE RANCHES AT ONIONTOP

100-300+ acre tracts  
LAMPASAS COUNTY



THE RANCHES AT ONIONTOP  
TEXASRANCH.COM